



zintra[®]
ORGANIC ETCH

Simple, tactile, and imperfectly perfect is how we describe our twelve new designs. Taking inspiration from skilled artisans, Organic Etch marries manmade elements and the natural world.

Available in the full 24-color range, choose from complementary natural tones like Linen, Pebble, and Slate, or be brave and make the designs pop with the vibrancy of Sunshine, Ochre or Cobalt.

Made from Zintra, our panels have been independently tested so that you know they're made from 100% recyclable materials, have low levels of VOC, don't contain formaldehyde, and are Class A fire rated.

Lightweight and easy to cut, Organic Etch is the perfect acoustic alternative to traditional commercial wallcoverings.



2. Product: Zintra Organic Etched Offset | Color: Brick



Product: Zintra Organic Etched Plaid | Color: Smoke



Product: Zintra Organic Etched Stacked | Color: Midnight



Product: Zintra Organic Etched Herringbone Stripe | Color: Pebble



Product: Zintra Organic Etched Twitch | Color: Ivory



Product: Zintra Organic Etched Rivers Vertical | Color: Cobalt

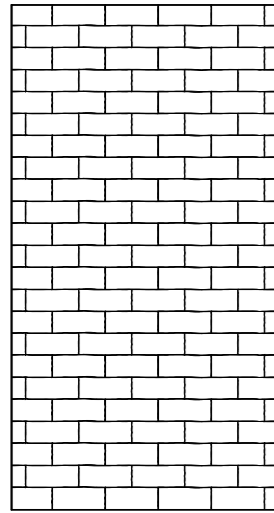


Product: Zintra Organic Etched Ceramic | Color: Cadet

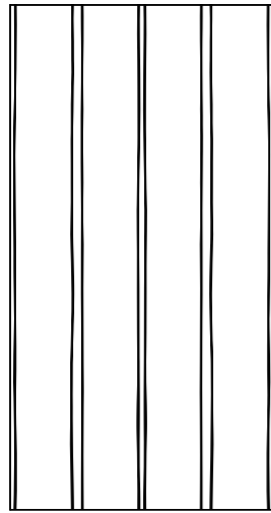
Plain Colors



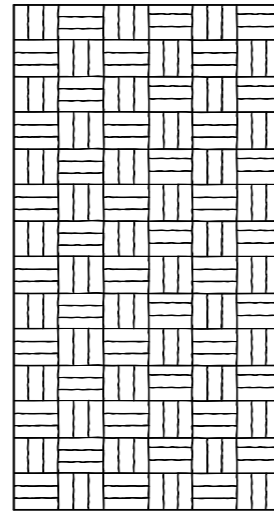
Available in 12 designs



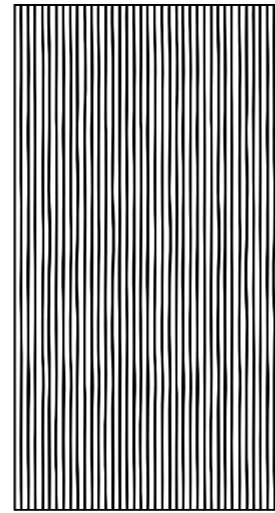
Offset



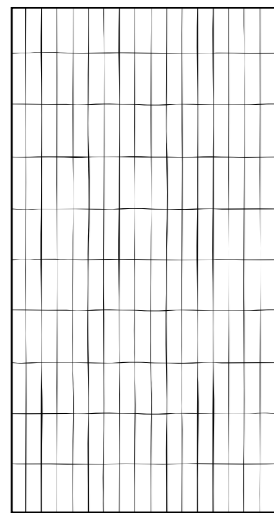
Stripe



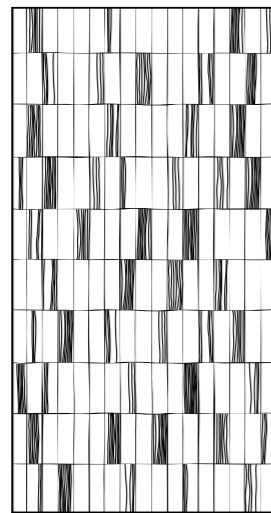
Ceramic



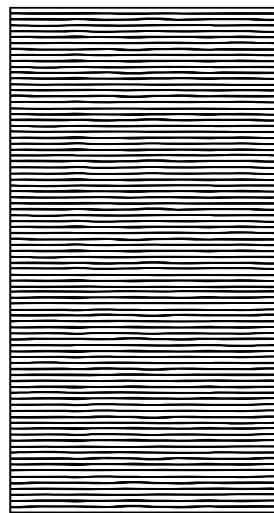
Stream Vertical



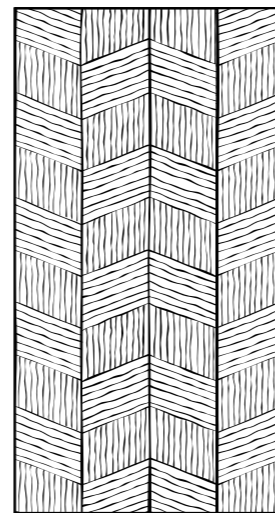
Stacked Plain



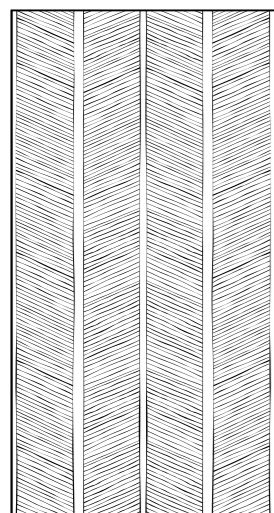
Stacked



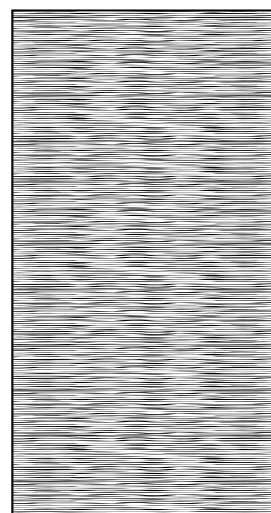
Stream



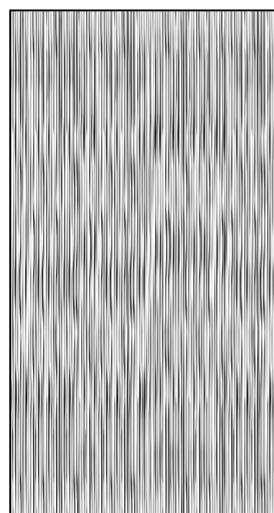
Twitch



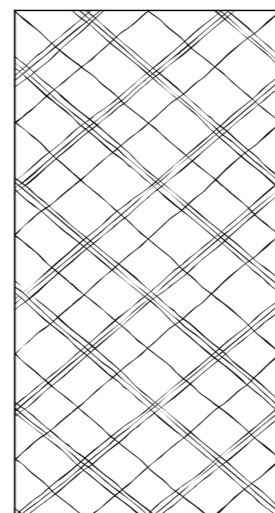
Herringbone Stripe



Rivers



Rivers Vertical



Plaid

Specifications

Width	48" (1225mm)
Height	110" (2800mm)
NRC Rating	NRC 0.45-0.75
Material	Zintra Acoustic Panel – 100% Solution Dyed (Color Through) Polyester
PET Thickness	1/2" (12mm)
Application	Indoor Only
Plain Colors	24
Customizable Print	Yes – get in touch to chat through your project requirements
Assembly Required	Yes
Fire Rating	ASTM-E84 – Class A classification AS ISO 9705 – 2003 – Group 1 classification EN-13501 – B-s2-d0 classification
Lightfastness	AATCC 16.3, Option 3: Zintra 1/2" (12mm) Panel color change at 40AFU is 4.5
Temperature	Maximum temperature exposure is 240°F (115°C)
Moisture Absorption	Polyester fibre when exposed to an atmosphere of 120°F (49°C) at 90% relative humidity for four days showed moisture absorption of less than 0.03% by weight
VOC Testing	Standard Method Version 1.2 for CDPH 01350: PASS for all testing scenarios
Care Instructions	Dab Zintra with a damp clean cloth and mild solution of liquid detergent and warm water. Repeat using only clean water, then pat dry with a lint free cloth. For difficult stains, use a solution of household bleach (10% bleach / 90% water). To remove the bleach, repeat using a clean, water dampened cloth, then pat dry. Always test in an inconspicuous area first and if you don't see the expected results, contact us.
Warranty	5 years

zintra[®]

ORGANIC ETCH

+1 855 922 7377

hello@zintraacoustic.com

zintraacoustic.com

Design: Zintra Organic Etched | Stream Horizontal | Color: Midnight

