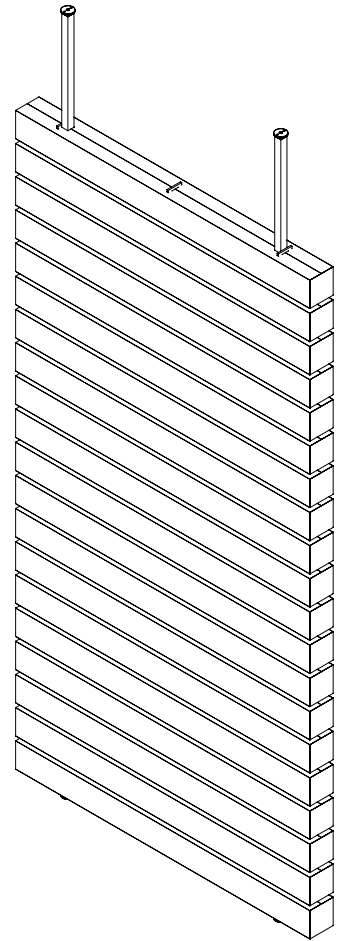
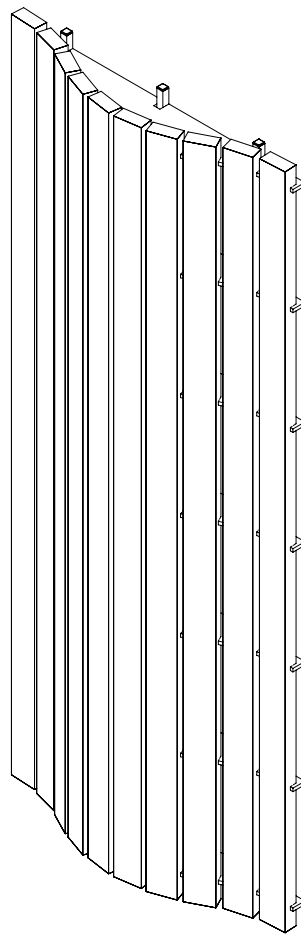
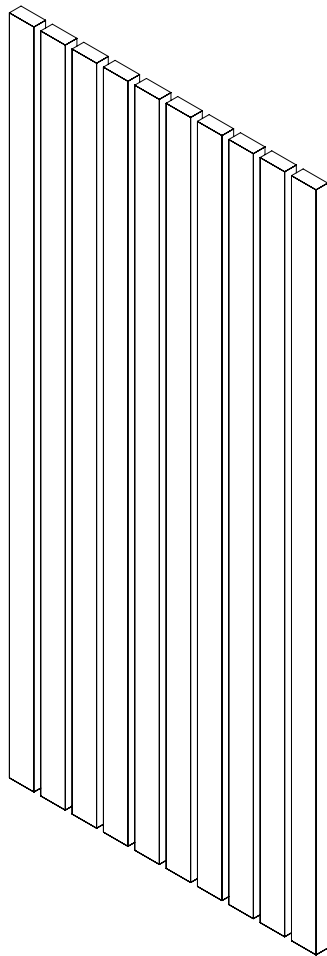
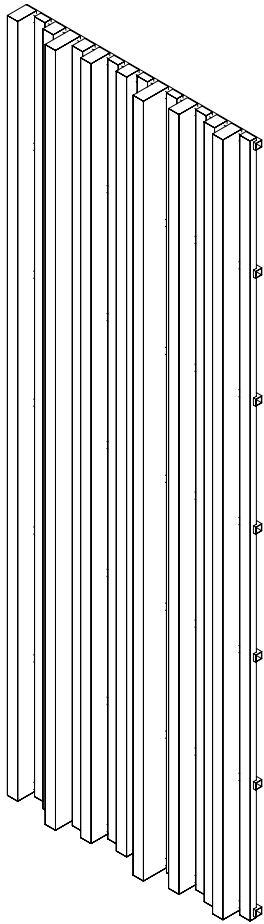




ZINTRA STICKS

END CAP SET
QUADRATIC, INDEPENDENT, CURVED,
DOUBLE SIDED LANDSCAPE
ASSEMBLY INSTALLATION INSTRUCTIONS





ZINTRA STICKS

END CAP SET

QUADRATIC, INDEPENDENT, CURVED, DOUBLE SIDED LANDSCAPE

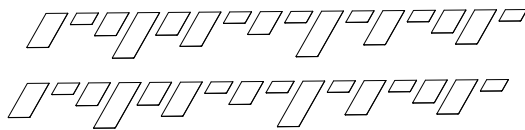
ASSEMBLY INSTALLATION INSTRUCTIONS

PARTS AND HARDWARE

FOR A TYPICAL ASSEMBLY - NARROW / WIDE

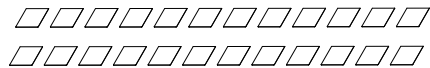
QUADRATIC END CAP SET:

(32) NARROW

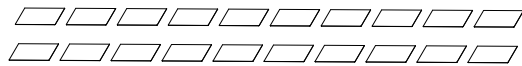


INDEPENDENT END CAP SET:

(24) NARROW

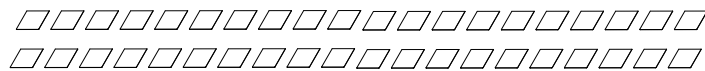


(20) WIDE

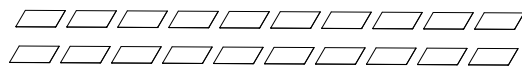


CURVED END CAP SET:

(40) NARROW

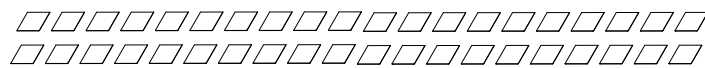


(20) WIDE



DOUBLE SIDED LANDSCAPE

FULL BUNDLE (80) NARROW OR (40) WIDE



HALF BUNDLE (40) NARROW OR (20) WIDE



ZINTRA STICKS

END CAP SET

QUADRATIC, INDEPENDENT, CURVED, DOUBLE SIDED LANDSCAPE

ASSEMBLY INSTALLATION INSTRUCTIONS

STEP 1

END CAPS

- (1.1) CHECK INSTALLED STICKS. ADJUST IF NECESSARY
- (1.2) PEELE OFF THE PROTECTIVE FILM FROM THE END CAPS
- (1.3) GLUE END CAPS TO ZINTRA STICKS

