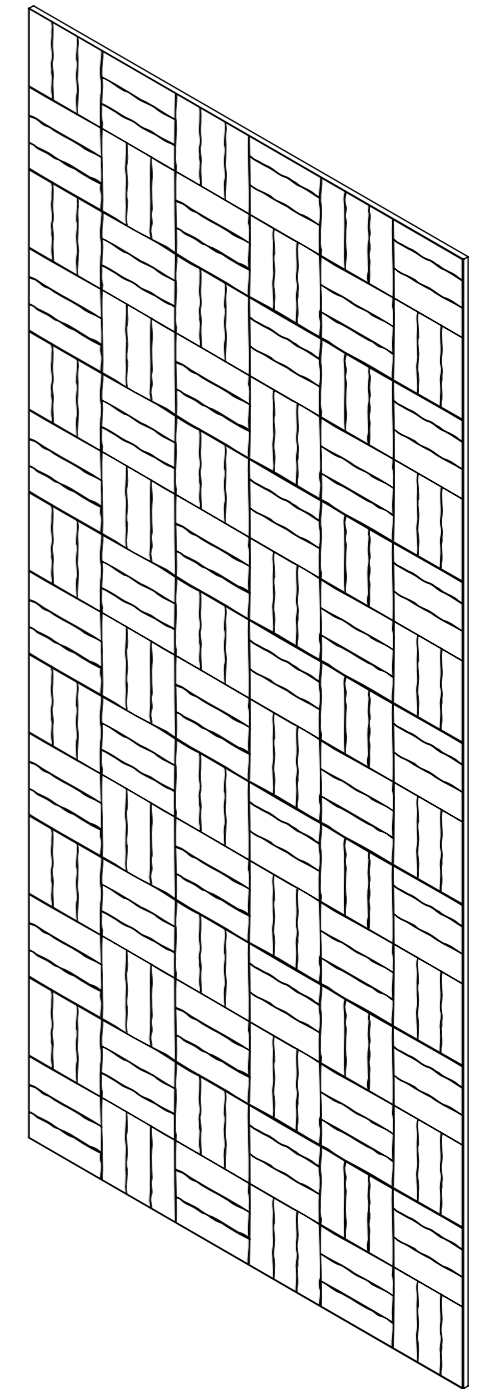


FRONT

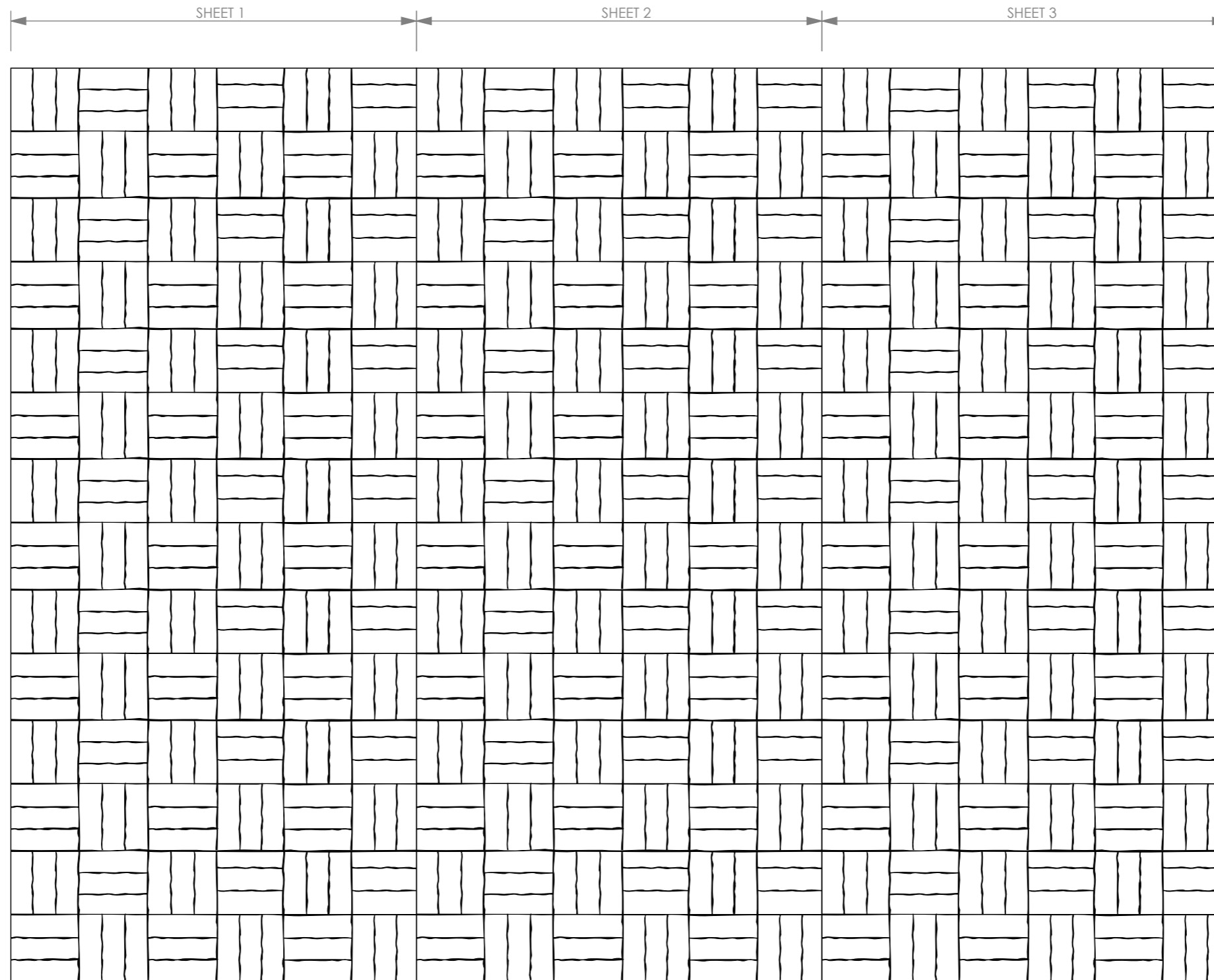
GRAIN DIRECTION FOR
ZINTRA TIMBER SPECIES

[0.50in]
12.70mm

SIDE



ISOMETRIC



EXAMPLE OF MULTIPLE PANELS

NOTE:
REFER TO INSTALLATION GUIDE
ON HOW TO ADHERE PANELS
TO WALL/ CEILING.