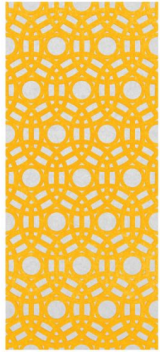


ABHAYA

Walls - Zindra Patterns



Texture: 3

Lustre: 1

Transparency: 1

DESCRIPTION / FEATURES	<p>Baresque's popular acoustic solution has undergone a style update to bring you Zindra Patterns.</p> <p>Experience our virtually unlimited range of classic to contemporary perforated designs cut out of Zindra, which can then be paired with a matching or contrasting solid Zindra backing panel to create a unique look for walls or ceilings. In just the one product you will find style, texture, contrast, depth and the added benefit of sound absorption to create a harmonious environment.</p> <ul style="list-style-type: none"> * Increased noise absorption (NRC 0.45 - 0.95) * Easy installation for walls, ceilings and as room dividers * Broad range of neutral and bright colours * Virtually unlimited range of designs
HOW TO SPECIFY	<ol style="list-style-type: none"> 1. Design 2. Size 3. Colour 4. Backing Colour (if required)
COMPOSITION	<p>Zindra Acoustic Panel - 100% Solution Dyed (Colour Through)</p> <p>Polyester</p>

FINISHES AVAILABLE	Zintra Plain 1/2" (12mm) Color Range Zintra Timber 1/2" (12mm) Color Range
STANDARD SIZE	<p>PATTERNS ONLY 48" x 108" x 0.5" (1220mm x 2745mm x 12mm) 23.8" x 47.8" x 0.5" (603mm x 1213mm x 12mm) 23.8" x 23.8" x 0.5" (603mm x 603mm x 12mm)</p> <p>PATTERNS ON BACKER 48" x 108" x 1" (1220mm x 2745mm x 24mm) 23.8" x 47.8" x 1" (603mm x 1213mm x 24mm) 23.8" x 23.8" x 1" (603mm x 603mm x 24mm)</p>
INDOOR/OUTDOOR	Indoor only
WET AREAS	No
PATTERN REPEAT	N/A
SUGGESTED INSTALLATION	<p>Zintra Pattern - choose from one of Baresque's hardware options or choose your own to install as a room divider, ceiling tile or wall / ceiling feature</p> <p>Zintra Pattern on Backer - Adhere to substrate using contact adhesive or Liquid Nails. Panel can be mechanically fixed using details similar to glass fittings</p>
CUSTOMISABLE	The Zintra Acoustic Solutions range is customisable to your project. Please get in touch with your local contact for details.
THERMOFORMABLE	No
FIRE RATING	<p>ASTM E-84 – Class A</p> <p>E-13501 – B-s2-d0</p> <p>AS 5637.1:2015 - Group 1</p>
ADDITIONAL COMMENTS	Not suitable as a free standing product.
FABRICATION	Utility knife or CNC with an oscillating knife

REFINISHABLE	No
CARE INSTRUCTIONS	<p>Remove spills immediately using damp, clean cloth.</p> <p>Dab Zintra with a clean, soft white cloth dampened with a mild solution of liquid detergent and warm water. Repeat using only clean water, then pat dry with a lint free cloth.</p> <p>Avoid using wax polishes, solvents or concentrated abrasives.</p> <p>For more difficult stains, dampen a soft white cloth with a solution of household bleach (10% bleach / 90% water). Dab gently. Repeat using only a clean, water dampened cloth to remove bleach concentration then pat dry with a lint free cloth.</p> <p>Always test in an inconspicuous area first. If care instructions don't deliver the expected results, cease cleaning method immediately and contact Baresque for assistance.</p>
ENVIRONMENTAL INFORMATION	<p>We believe in the sustainability of both our planet and our people. We do everything we can to minimise our environmental impact and create spaces that contribute to the wellness of the people that use them.</p> <p>Certified by Declare and HPD, Zintra is made from 100% recyclable materials. It has low levels of volatile organic compounds and contains</p>



	<p>no formaldehyde. It's Red List Free and meets the Global Recycling Standard.</p> <p>Reducing noise levels, minimizing indoor air pollutants, easy cleaning and a Class A fire rating are just a few of the reasons that Zintra is the perfect material for the green buildings of today and tomorrow.</p>
--	--