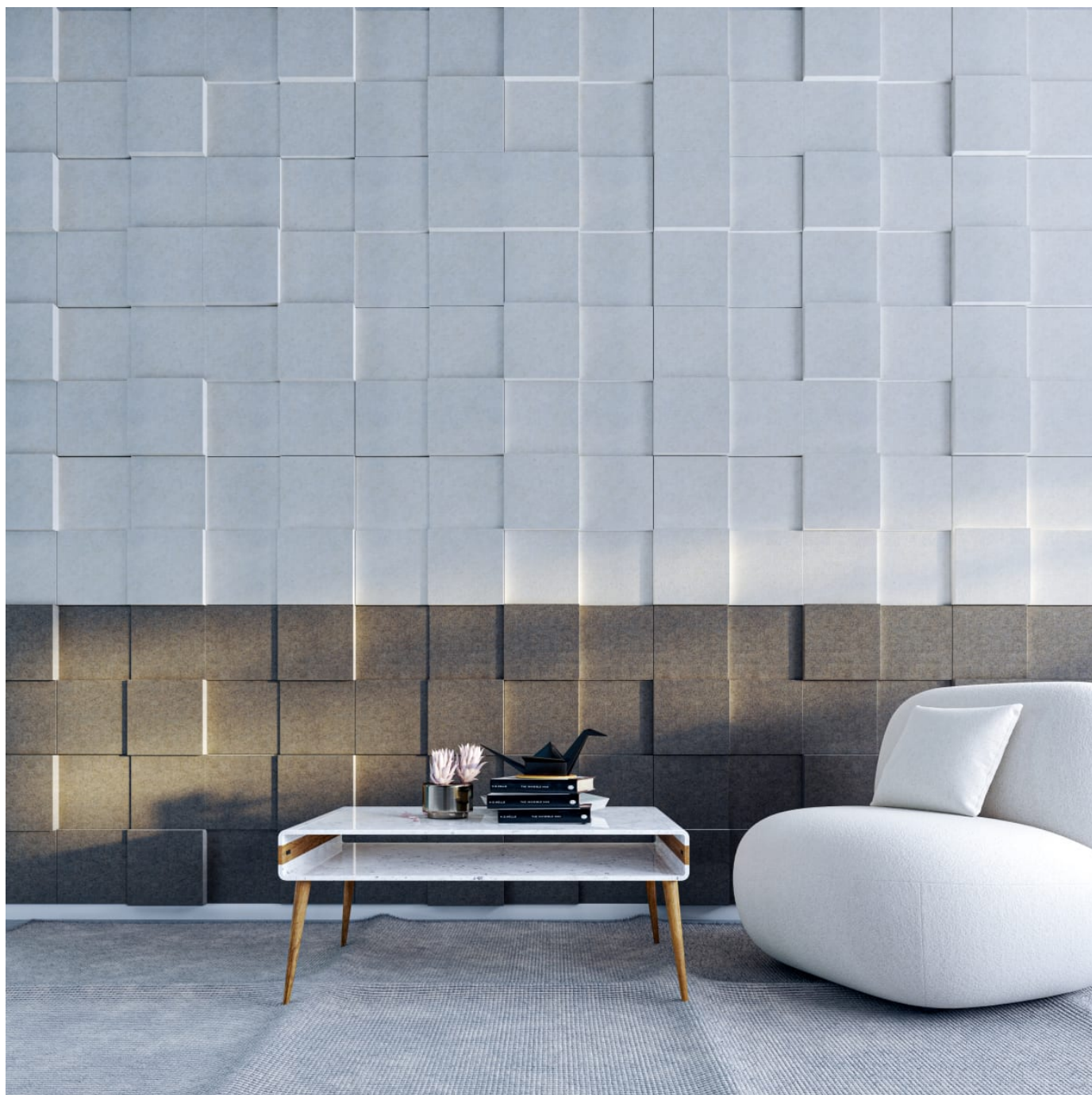


# BOX TILES SQUARE

Tiles



Brand: **Zintra**

Collections: **Box Tiles**

Applications: **Walls, Ceilings**

+1 855 922 7377

hello@zintraacoustic.com

zintraacoustic.com

1 of 8

**zintra**<sup>®</sup>

# BOX TILES SQUARE

Tiles



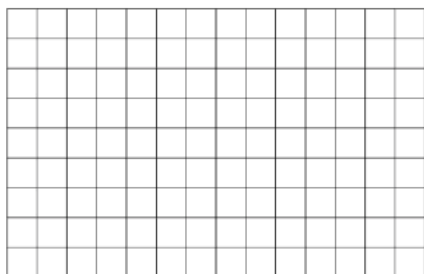
Box Tile Square 75mm 3in Detail



Box Tile Diamond 38mm 1.5in Detail

## 126 Tile Assembly

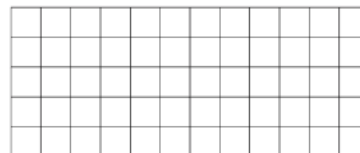
2 sets of 8x8x1.5  
2 sets of 8x8x2.25  
2 sets of 8x8x3



Assembly Suggestions Box Tiles Square 1

## 60 Tile Assembly

1 set of 8x8x1.5  
1 set of 8x8x2.25  
1 set of 8x8x3



Assembly Suggestions Box Tiles Square 2

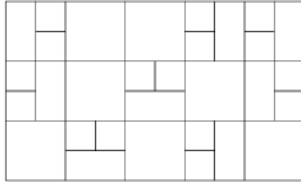
# BOX TILES SQUARE

Tiles

---

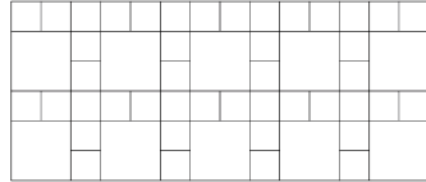
## 31 Tile Assembly

1 set of 8x8x2.25  
1 set of 8x16x2.25  
1 set of 16x16x2.25



## 54 Tile Assembly

1 set of 8x8x1.5  
1 set of 8x8x2.25  
1 set of 8x8x3  
1 set of 16x16x3



Assembly Suggestions Box Tiles Square 3

Assembly Suggestions Box Tiles Square 4

# BOX TILES SQUARE

Tiles

Discover the dynamic solution of Zintra Box Tiles for superior acoustics. Experience acoustic benefits alongside texture and definition. Zintra Square Box Tiles come in a range of standard sizes and depths that make them easy on the eye and easy to install.

✓ Bleach Cleanable

✓ Acoustic

✓ Easy Install

✓ Easy Clean

## Description

Zintra's Box Tiles go beyond just covering walls—they add texture, depth, and striking definition to any space, whilst providing superior acoustic benefits. With a range of standard sizes and depths, as well as large format you can tailor your design to suit your space perfectly.

Whether you're envisioning a seamless wall-to-wall installation or a striking acoustic feature, Box Tiles offer unparalleled flexibility. Perfect for commercial, hospitality, and institutional settings, they effortlessly blend style with functionality, enhancing every inch of your space.

### Square

Inspired by the timeless elegance of squares, Square brings a touch of geometric precision and modern style to your space. This captivating design showcases a series squares, creating a visually striking and dynamic design. With its clean lines and balanced symmetry, Square adds a sense of structure and visual interest to any interior. Easy to layout, mix and match, and install, their versatility is an effective addition to any wall.

**Available in 5 other great designs**, in various sizes and depths (refer to dimensions for size specific information)

Diamond | Emerald | Hex | Pitched | Rectangle

So, if you're aiming to amplify the ambiance of a restaurant, hotel, or office space, Zintra's Box Tiles are a brilliant choice, delivering both captivating style and practical functionality.

Available in the full Zintra Colour range including digital print

## Composition

Zintra Acoustic Panel - 100% Solution Dyed (Colour Through) Polyester

12mm (1/2") - Density 2.4 kg /m<sup>2</sup> 0.5 lb/ft<sup>2</sup>

## Sustainability

Zintra is made from 100% recyclable materials.

- 60% post-consumer recycled content from PET bottles.
- 35% pre-consumer recycled content from PET chips
- 5% polylactic acid (PLA)

# BOX TILES SQUARE

Tiles

---

## Dimensions

### Square 8x8

- 21 tiles / set, 0.87m<sup>2</sup> (9.33 SF)
- 203mm (8") w x 203mm (8") h
- Available in 38mm (1.5"), 57mm (2.3"), 76mm (3") d/ tile

### Square 16x16

- 10 tiles / set, 1.65 m<sup>2</sup> (17.8 SF)
  - 406mm (16") w x 406mm (16") h
  - Available in 38mm (1.5"), 57mm (2.3"), 76mm (3") d/ tile
- 

## Fire Rating

ASTM-E84 – Class A classification  
AS ISO 9705 – 2003 – Group 1 classification  
EN-13501 – B-s2-d0 classification

---

## Supplied As

- Square 8X8 21 tiles / set, 0.87m<sup>2</sup> (9.33 SF)
  - Square 16x16 10 tiles / set, 1.65 m<sup>2</sup> (17.8 SF)
- 

## Assembly & Delivery

Ships Flat Packed. Assembly Required.

- Supplied as a set of individual tiles.
- Arrange as required.

Go to the Technical Documents and download the Installation Guide for more details.

---

## Suggested Installation

Go to Technical Documents and download the Installation Guide for more details.

---

## Care Instructions

Vacuum to remove dust.

Dab Zintra with a damp clean cloth and mild solution of liquid detergent and warm water. Repeat using only clean water, then pat dry with a lint free cloth.

For difficult stains, use a solution of household bleach (10% bleach / 90% water). To remove the bleach, repeat using a clean, water dampened cloth, then pat dry.

Always test in an inconspicuous area first and if you don't see the expected results, contact us.

---

# BOX TILES SQUARE

Tiles

---

**Warranty** Visit FAQ for more details.

---

**Customisable** The Zintra Acoustic Solutions range is customisable to your project. Please get in touch with your local contact for details.

---

**Additional Comments**

- NRC up to 1.15 Directly Mounted
- Alpha-w Directly Mounted up to 1.00

---

**How to Specify**

1. Select Design
2. Select Zintra Colour

---

# BOX TILES SQUARE

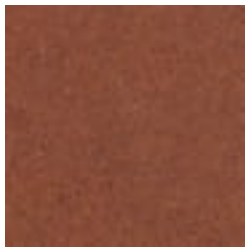
Tiles

## Color & Finish Options

Zintra 12mm Solid PET



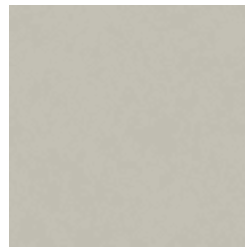
Bark



Brick



Cadet



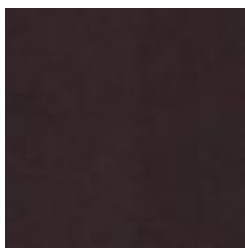
Chambray



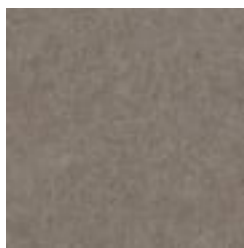
Cobalt



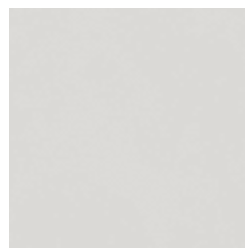
Ecru



Elderberry



Fossil



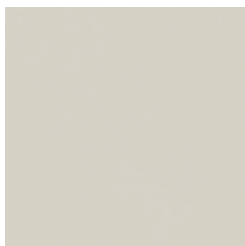
Frost



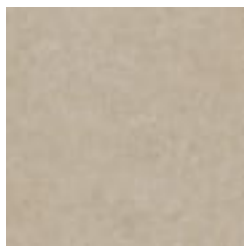
Grass



Greige



Ivory



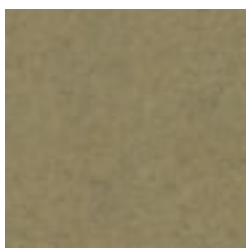
Linen



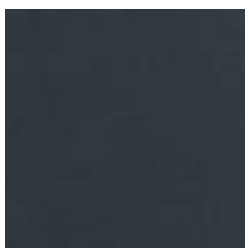
Malachite



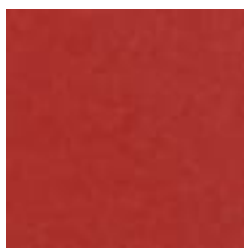
Mandarin



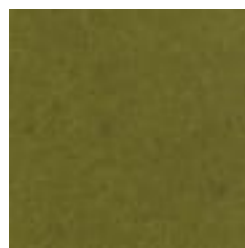
Meadow



Midnight



Ochre



Olive



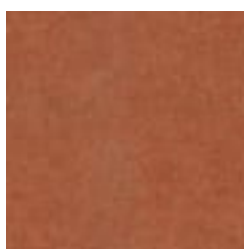
Parchment



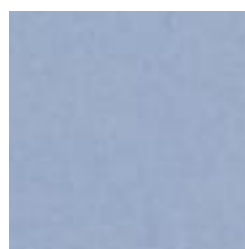
Pebble



Pewter



Saffron



Sky



Smoke

+1 855 922 7377

hello@zintraacoustic.com

zintraacoustic.com

7 of 8

zintra®

# BOX TILES SQUARE

Tiles

---



Slate



Storm



Sunshine



Tar



Twilight

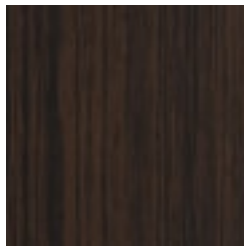
## Zintra Timber Print



Eucalyptus



Ironbark



Merbau



Spotted Gum