

ETCH TILES PLANK

Acoustic Tiles



Brand: **Zintra**

ETCH TILES PLANK

Acoustic Tiles



Etch Tiles Plank Detail

15 Tile Assembly



Assembly Suggestions
Etch Tiles Plank

ETCH TILES PLANK

Acoustic Tiles

Every line tells a story with Zintra Etch Tiles, Plank. Sculptural, dynamic, and diverse in design, they inspire endless possibilities for dynamic arrangements and playful pattern exploration.

✓ **Bleach Cleanable**

✓ **Acoustic**

✓ **Easy Install**

✓ **Easy Clean**

Description

Zintra Etch Tiles, where acoustic absorption meets dynamic 3D design. Crafted using a 3mm v-groove, the angled blade creates contemporary, design-led patterns that add a touch of sophistication to any space. Whether you're aiming for a progressive, modern interior or a welcoming atmosphere, Zintra Etch offers a range of subtle textures to suit your design needs.

Available in an extensive range of understated to statement Colours, Zintra Etch Tiles offer a cost-effective solution to enhance both sound quality and visual appeal in commercial, hospitality, and institutional interiors. Create calming environments with these versatile tiles, which can be seamlessly integrated with plain Zintra panels for a cohesive look.

Install either wall to wall or as feature artwork to create an option suitable for any commercial, education or hospitality environment.

Plank*

Inspired by the beauty of natural wood, Plank brings a touch of warmth and organic elegance to your space. This captivating pattern showcases a series of interlocking planks, creating a visually stunning and versatile design.

Available in 15 designs

Battleaxe* | Chevron* | Crossbar | Diamond* | Fluted | Herringbone* | Hexagon* | Hourglass* | Link | Louver | Plank* | Shadow Box | Square* | Trapezium* | Triangle*

* Notes designs available in both Plain and Etch.

Sold in sets.

Transform your space with style and acoustic efficiency.

Not suitable as a free-standing product.

Dimensions

Plank:

- 26 tiles / set, 3.1m² (33.5 SF)
- 600mm (23.62") h x 200mm (7.87") w

Composition

Zintra Acoustic Panel - 100% Solution Dyed (Colour Through) Polyester

- 12mm (1/2") - Density 2.4 kg /m² 0.5 lb/ft²
- 24mm (1") - Density 3.6 kg /m² 0.75 lb/ft²

ETCH TILES PLANK

Acoustic Tiles

Sustainability

Zintra is made from 100% recyclable materials.

- 60% post-consumer recycled content from PET bottles.
 - 35% pre-consumer recycled content from PET chips
 - 5% polylactic acid (PLA)
-

Fire Rating

ASTM-E84 – Class A classification
AS ISO 9705 – 2003 – Group 1 classification
EN-13501 – B-s2-d0 classification

Warranty

Visit FAQ for more details.

Assembly & Delivery

Ships Flat Packed.

- Supplied as a set of individual tiles.
- Arrange as required.

Go to the Technical Documents and download the Installation Guide for more details.

Supplied As

- Plank 26 Tiles / set, 3.1m² (33.5 SF)
-

Suggested Installation

Go to Technical Documents and download the Installation Guide for more details.

How to Specify

1. Select Design
 2. Select Zintra Colour
-

Care Instructions

Vacuum to remove dust.

Dab Zintra with a damp clean cloth and mild solution of liquid detergent and warm water. Repeat using only clean water, then pat dry with a lint free cloth.

For difficult stains, use a solution of household bleach (10% bleach / 90% water). To remove the bleach, repeat using a clean, water dampened cloth, then pat dry.

Always test in an inconspicuous area first and if you don't see the expected results, contact us.

ETCH TILES PLANK

Acoustic Tiles

Customisable

The Zintra Acoustic Solutions range is customisable to your project. Please get in touch with your local contact for details.

Additional Comments

- NRC 0.45-0.75 Directly Mounted
 - Alpha-w Rating Directly Mounted 0.30-0.60
-

ETCH TILES PLANK

Acoustic Tiles

Color & Finish Options

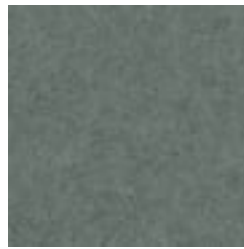
Zintra 12mm Solid PET



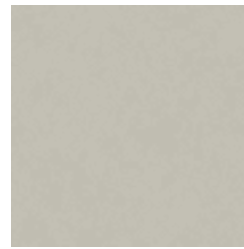
Bark



Brick



Cadet



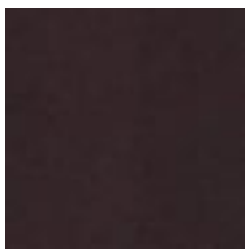
Chambray



Cobalt



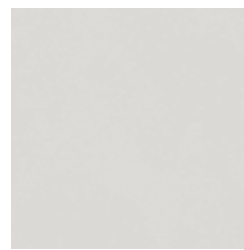
Ecu



Elderberry



Fossil



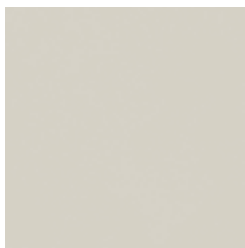
Frost



Grass



Greige



Ivory



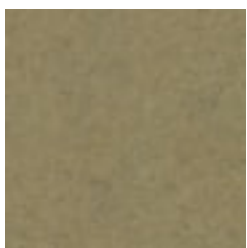
Linen



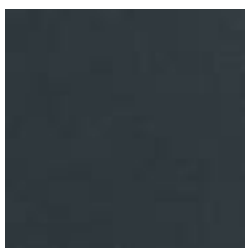
Malachite



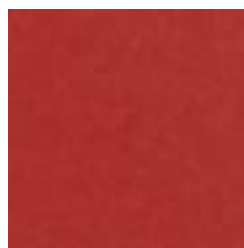
Mandarin



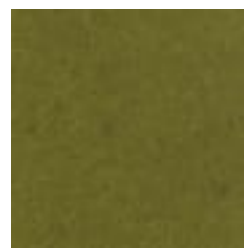
Meadow



Midnight



Ochre



Olive



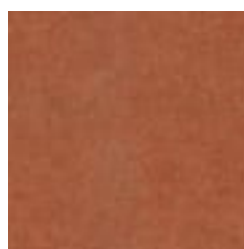
Parchment



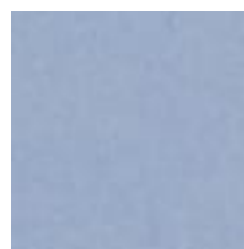
Pebble



Pewter



Saffron



Sky



Smoke

+1 855 922 7377

hello@zintraacoustic.com

zintraacoustic.com

6 of 7

zintra®

ETCH TILES PLANK

Acoustic Tiles



Slate



Storm



Sunshine



Tar



Twilight

Zintra Timber Print



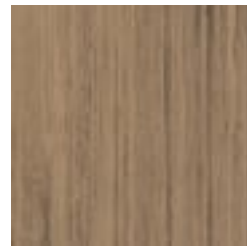
Eucalyptus



Ironbark



Merbau



Spotted Gum