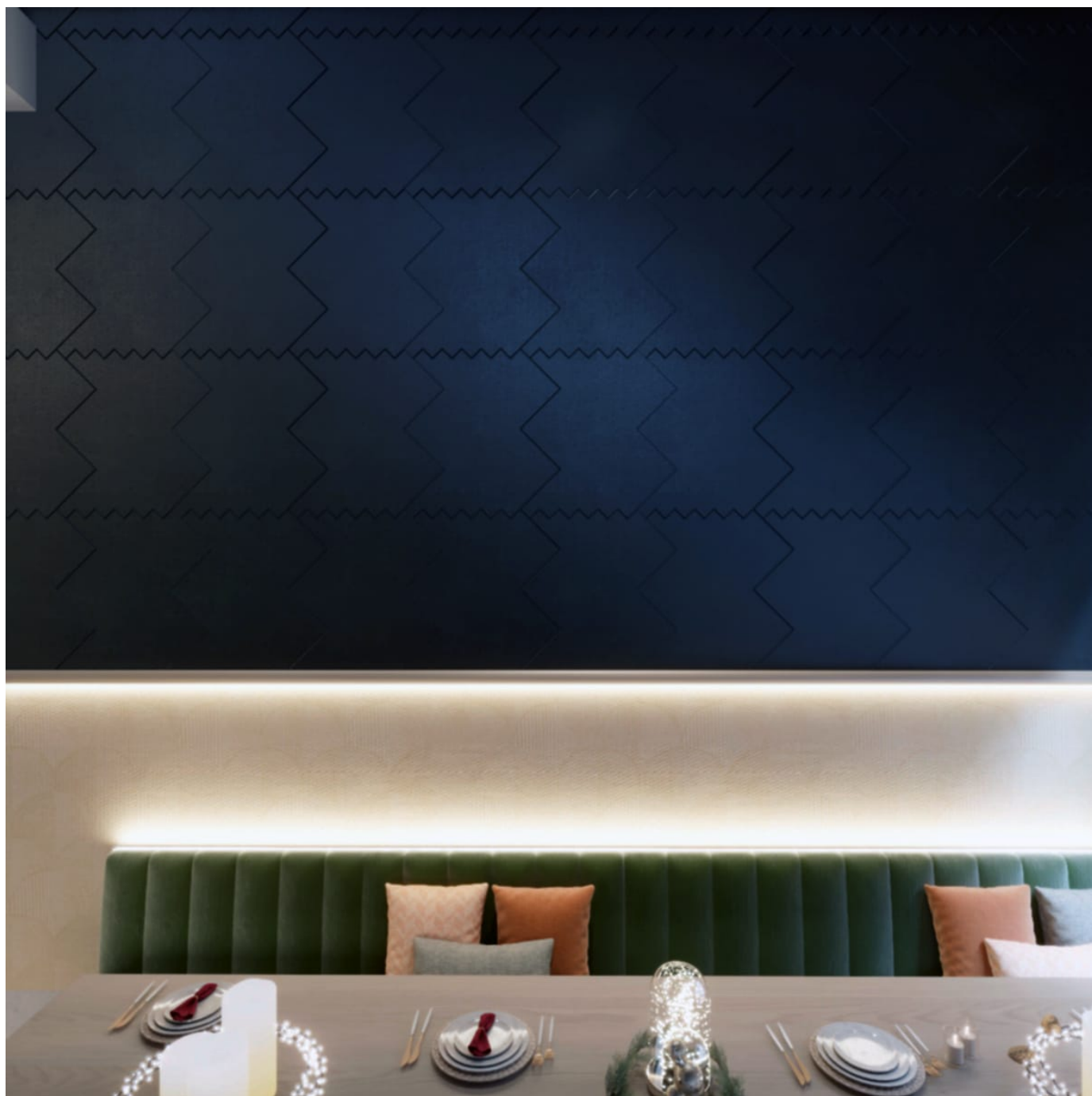


# PLAIN TILES HERRINGBONE

Tiles



Brand: **Zintra**

Collection: **Plain Tiles**

+1 855 922 7377

hello@zintraacoustic.com

zintraacoustic.com

1 of 7

**zintra**<sup>®</sup>

# PLAIN TILES HERRINGBONE

Tiles

---



Plain Tile Herringbone  
Detail

12 Tile Assembly



Assembly Suggestions  
Plain Tiles  
Herringbone

# PLAIN TILES HERRINGBONE

Tiles

Transform your space with Zintra Plain Tiles Herringbone. Silence unwanted distractions and foster a serene and productive environment. Sold in sets.

✓ **Acoustic**

✓ **Bleach Cleanable**

✓ **Easy Clean**

✓ **Easy Install**

## Description

Explore endless design possibilities by mixing and matching Zintra Etch and Plain Tiles. With a diverse range of shapes and a vibrant colour palette, you have the freedom to select from a spectrum of hues, bringing your design vision to life and creating an acoustically minded space.

Experience Effortless Installation with our lightweight and seamless Zintra tiles, ensuring a smooth and hassle-free process. Whether installed wall to wall or as captivating feature artwork, they're the perfect fit for any commercial, educational, or hospitality setting, seamlessly merging aesthetics with acoustic excellence.

### Herringbone\*

This captivating pattern showcases a series of interlocking rectangular tiles arranged in a distinctive zigzag pattern, creating a visually dynamic and stylish design.

### Available in 14 designs (Includes Tablet – available in 3 sizes)

Battleaxe\* | Chevron\* | Diamond\* | Herringbone\* | Hexagon\* | Hourglass\* | Jigsaw | Parallelogram | Plank\* | Rectangle | Square\* | Tablet

\* Notes designs available in both Plain and Etch.

Tiles are sold in sets.

Not suitable as a free-standing product.

## Dimensions

### Herringbone:

12 Tiles / set, 2.8m<sup>2</sup> (30.1 SF)  
554mm (21.80") h x 600mm x (23.62") w

## Composition

Zintra Acoustic Panel - 100% Solution Dyed (Colour Through) Polyester

12mm (1/2") - Density 2.4 kg /m<sup>2</sup> 0.5 lb/ft<sup>2</sup>

## Sustainability

Zintra is made from 100% recyclable materials.

- 60% post-consumer recycled content from PET bottles.
- 35% pre-consumer recycled content from PET chips
- 5% polylactic acid (PLA)

# PLAIN TILES HERRINGBONE

Tiles

---

**Fire Rating**                    ASTM-E84 – Class A classification  
AS ISO 9705 – 2003 – Group 1 classification  
EN-13501 – B-s2-d0 classification

---

**Assembly & Delivery**        • Ships Flat Packed.  
  
• Supplied as a set of individual tiles.  
  
• Arrange as required.

Go to the Technical Documents and download the Installation Guide for more details.

---

**Supplied As**                    • **Herringbone:**  
  
• 12 tiles / set, 2.8m<sup>2</sup> (30.1 SF)

---

**Suggested Installation**        Go to Technical Documents and download the Installation Guide for more details.

---

**How to Specify**                1. Select Design  
  
2. Select Zintra Colour

---

**Care Instructions**            Vacuum to remove dust.  
  
Dab Zintra with a damp clean cloth and mild solution of liquid detergent and warm water. Repeat using only clean water, then pat dry with a lint free cloth.  
  
For difficult stains, use a solution of household bleach (10% bleach / 90% water). To remove the bleach, repeat using a clean, water dampened cloth, then pat dry.  
  
Always test in an inconspicuous area first and if you don't see the expected results, contact us.

---

**Customisable**                The Zintra Acoustic Solutions range is customisable to your project. Please get in touch with your local contact for details.

---

**Additional Comments**        NRC 0.45-0.75  
  
Directly Mounted

---

# PLAIN TILES HERRINGBONE

Tiles

## Color & Finish Options

Zintra 12mm Solid PET



Bark



Brick



Cadet



Chambray



Cobalt



Ecu



Elderberry



Fossil



Frost



Grass



Greige



Ivory



Linen



Malachite



Mandarin



Meadow



Midnight



Ochre



Olive



Parchment



Pebble



Pewter



Saffron



Sky



Smoke

+1 855 922 7377

hello@zintraacoustic.com

zintraacoustic.com

5 of 7

zintra®

# PLAIN TILES HERRINGBONE

Tiles



Slate



Storm



Sunshine



Tar



Twilight

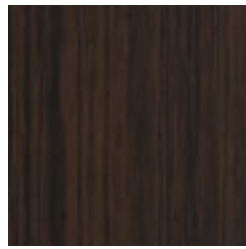
## Zintra Timber Print



Eucalyptus



Ironbark



Merbau

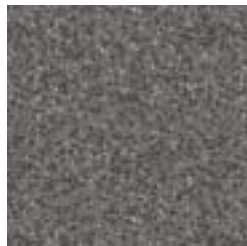


Spotted Gum

## Zintra Premium Material



Terrazzo Light



Terrazzo Medium



Terrazzo Dark



Travertine Light



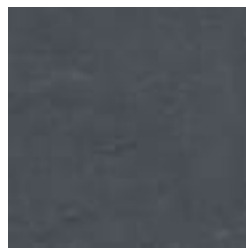
Travertine Medium



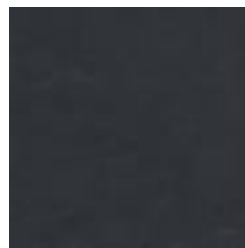
Travertine Dark



Shale Light



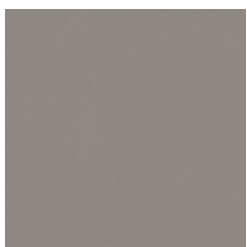
Shale Medium



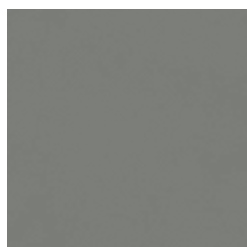
Shale Dark



Raku Bone



Raku Luster



Raku Jade



Concrete Cast



Concrete Polished



Concrete Dark Tint

+1 855 922 7377

hello@zintraacoustic.com

zintraacoustic.com

# PLAIN TILES HERRINGBONE

Tiles

---



Terracotta Sun  
Bleached



Terracotta Mission



Terracotta Antique

## Zintra Premium Wood



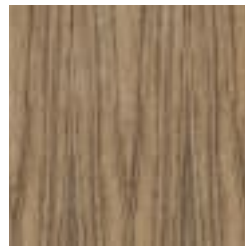
Knotty Pine



Maple



Poplar



Australian Walnut



Claro Walnut



Palm Wood



Rustic Walnut



Cherry



Euro Beech



Lacewood



Redwood



White Oak