

PLAIN TILES DIAMOND

Tiles



Brand: **Zintra**

Collections: **Plain Tiles**

Applications: **Walls**

+1 855 922 7377

hello@zintraacoustic.com

zintraacoustic.com

1 of 7

zintra[®]

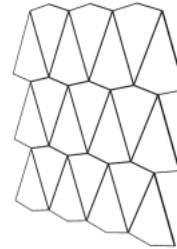
PLAIN TILES DIAMOND

Tiles



Plain Tiles Diamond Detail

21 Tile Assembly



Assembly Suggestions Plain Tiles Diamond

PLAIN TILES DIAMOND

Tiles

Transform your space with Zintra Plain Tiles, Diamond. Silence unwanted distractions and foster a serene and productive environment. Sold in sets.

✓ **Acoustic**

✓ **Bleach Cleanable**

✓ **Easy Clean**

✓ **Easy Install**

Description

Explore endless design possibilities by mixing and matching Zintra Etch and Plain Tiles. With a diverse range of shapes and a vibrant colour palette, you have the freedom to select from a spectrum of hues, bringing your design vision to life and creating an acoustically minded space.

Experience Effortless Installation with our lightweight and seamless Zintra tiles, ensuring a smooth and hassle-free process. Whether installed wall to wall or as captivating feature artwork, they're the perfect fit for any commercial, educational, or hospitality setting, seamlessly merging aesthetics with acoustic excellence.

Diamond*

Showcases a series of interlocking diamond-shaped tiles, creating a visually striking and dynamic design. With their sleek lines and geometric precision, Diamond Tiles add a sense of modern style and visual intrigue to any interior.

Available in 14 designs (Includes Tablet – available in 3 sizes)

Battleaxe* | Chevron* | Diamond* | Herringbone* | Hexagon* | Hourglass* | Jigsaw | Parallelogram | Plank* | Rectangle | Square* | Tablet

* Notes designs available in both Plain and Etch.

Tiles are sold in sets.

Not suitable as a free-standing product.

Composition

Zintra Acoustic Panel - 100% Solution Dyed (Colour Through) Polyester

12mm (1/2") - Density 2.4 kg /m² 0.5 lb/ft²

Sustainability

Zintra is made from 100% recyclable materials.

- 60% post-consumer recycled content from PET bottles.
- 35% pre-consumer recycled content from PET chips
- 5% polylactic acid (PLA)

Dimensions

Diamond:

20 Tiles / set, 2.4m² (25.8 SF)

600mm (23.62") h x 400mm (15.75") w

PLAIN TILES DIAMOND

Tiles

Fire Rating ASTM-E84 – Class A classification
AS ISO 9705 – 2003 – Group 1 classification
EN-13501 – B-s2-d0 classification

Supplied As • **Diamond:**

- 20 tiles / set, 2.4m² (25.8 SF)

Assembly & Delivery • Ships Flat Packed.

- Supplied as a set of individual tiles.
- Arrange as required.

Go to the Technical Documents and download the Installation Guide for more details.

Suggested Installation Go to Technical Documents and download the Installation Guide for more details.

Care Instructions Vacuum to remove dust.

Dab Zintra with a damp clean cloth and mild solution of liquid detergent and warm water. Repeat using only clean water, then pat dry with a lint free cloth.

For difficult stains, use a solution of household bleach (10% bleach / 90% water). To remove the bleach, repeat using a clean, water dampened cloth, then pat dry.

Always test in an inconspicuous area first and if you don't see the expected results, contact us.

Warranty Visit FAQ for more details.

Customisable The Zintra Acoustic Solutions range is customisable to your project. Please get in touch with your local contact for details.

Additional Comments NRC 0.45-0.75

Directly Mounted

How to Specify 1. Select Design

2. Select Zintra Colour

PLAIN TILES DIAMOND

Tiles

Color & Finish Options

Zintra 12mm Solid PET



Bark



Brick



Cadet



Chambray



Cobalt



Ecu



Elderberry



Fossil



Frost



Grass



Greige



Ivory



Linen



Malachite



Mandarin



Meadow



Midnight



Ochre



Olive



Parchment



Pebble



Pewter



Saffron



Sky



Smoke

+1 855 922 7377

hello@zintraacoustic.com

zintraacoustic.com

5 of 7

zintra®

PLAIN TILES DIAMOND

Tiles



Slate



Storm



Sunshine



Tar



Twilight

Zintra Timber Print



Eucalyptus



Ironbark



Merbau



Spotted Gum

Zintra Premium Material



Terrazzo Light



Terrazzo Medium



Terrazzo Dark



Travertine Light



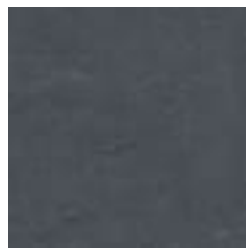
Travertine Medium



Travertine Dark



Shale Light



Shale Medium



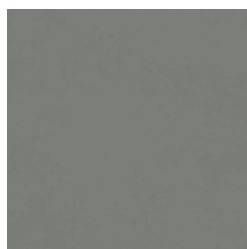
Shale Dark



Raku Bone



Raku Luster



Raku Jade



Concrete Cast



Concrete Polished



Concrete Dark Tint

+1 855 922 7377

hello@zintraacoustic.com

zintraacoustic.com

PLAIN TILES DIAMOND

Tiles



Terracotta Sun
Bleached



Terracotta Mission



Terracotta Antique

Zintra Premium Wood



Knotty Pine



Maple



Poplar



Australian Walnut



Claro Walnut



Palm Wood



Rustic Walnut



Cherry



Euro Beech



Lacewood



Redwood



White Oak