

# BOX BAFFLES UNIFORMED HIGH

Acoustic Baffles

---



Brand: **Zintra**

Collection: **Box Baffles**

+1 855 922 7377

hello@zintraacoustic.com

**zintraacoustic.com**

1 of 7

**zintra**<sup>®</sup>

# BOX BAFFLES UNIFORMED HIGH

Acoustic Baffles

---

Suspended box-shaped baffles are an innovative replacement to a mineral fibre lay system. Box Baffles Uniformed High are easy to assemble and install.

---

## Description

Zintra Baffles are prefabricated, ceiling mounted systems that showcase Zintra's flexible characteristics. Zintra Acoustic Baffles are an innovative replacement to a mineral fibre lay system. Easy to assemble, easy to install and available in a large array of designs, baffles are ideally suited to large noisy spaces in educational institutions, shopping centres, restaurants, and airports.

Suspended box-shaped baffles hung in perfectly spaced rows create these high performing baffles. The box shape feature not only looks more substantial, but also increases the NRC rating by capturing sound within. Select the same shaped baffles or mix them up for added dimension.

Available in uniformed (high and low), random or mixed combinations.

Choose from one of our 12 vibrant powdercoat colors (additional charge)

---

## Dimensions

### Available in 2 sizes:

- 1000mm (39.4") w x 1200mm (47.24") d
  - 1000mm (39.4") w x 2400mm (95.4") d
- 

## Composition

Zintra Acoustic Panel - 100% Solution Dyed (Colour Through) Polyester  
12mm (1/2") - Density 2.4 kg /m<sup>2</sup> 0.5 lb/ft<sup>2</sup>

---

## Sustainability

Zintra is made from 100% recyclable materials.

- 60% post-consumer recycled content from PET bottles.
  - 35% pre-consumer recycled content from PET chips
  - 5% polylactic acid (PLA)
- 

## Fire Rating

ASTM-E84 – Class A classification  
AS ISO 9705 – 2003 – Group 1 classification  
EN-13501 – B-s2-d0 classification

---

## Warranty

Visit FAQ for more details.

---

# BOX BAFFLES UNIFORMED HIGH

Acoustic Baffles

---

## Assembly & Delivery

Ships Flat Packed.

- Assemble your Baffle System then suspend from the ceiling using hanging hardware supplied.
- Recommended 2 People assembly

Go to the Technical Documents and download the Installation Guide for more details.

---

## Supplied As

- Zintra Baffles as per specified design.
  - 6 x Adjustable Suspension Kit (ASK)
  - 2 x Aluminium Tube with Notches
- 

## Suggested Installation

Go to Technical Documents and download the Installation Guide for more details.

---

## How to Specify

1. Select Design
  2. Select Size
  3. Select Zintra Colour
- 

## Care Instructions

Vacuum to remove dust.

Dab Zintra with a damp clean cloth and mild solution of liquid detergent and warm water. Repeat using only clean water, then pat dry with a lint free cloth.

For difficult stains, use a solution of household bleach (10% bleach / 90% water). To remove the bleach, repeat using a clean, water dampened cloth, then pat dry.

Always test in an inconspicuous area first and if you don't see the expected results, contact us.

---

## Customisable

The Zintra Acoustic Solutions range is customisable to your project. Please get in touch with your local contact for details.

---

## Additional Comments

NRC Rating

- Without Air Gap: Up to 0.90
  - With 24" (610mm) Air Gap: Up to 0.95
-

# BOX BAFFLES UNIFORMED HIGH

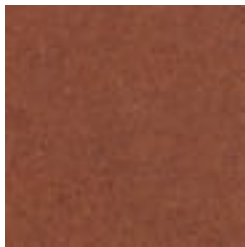
Acoustic Baffles

## Color & Finish Options

Zintra 12mm Solid PET



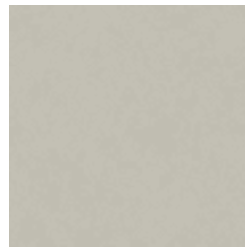
Bark



Brick



Cadet



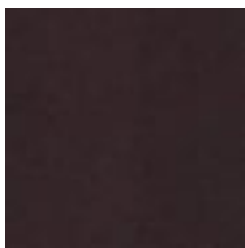
Chambray



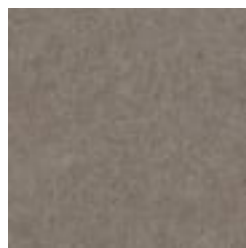
Cobalt



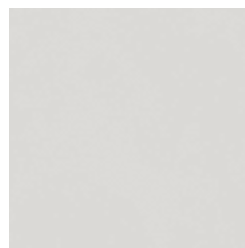
Ecu



Elderberry



Fossil



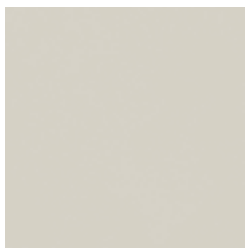
Frost



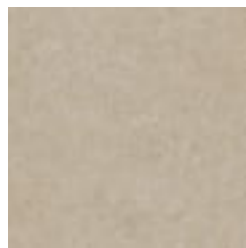
Grass



Greige



Ivory



Linen



Malachite



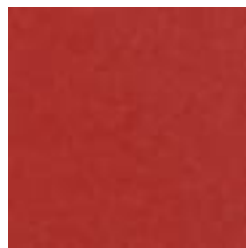
Mandarin



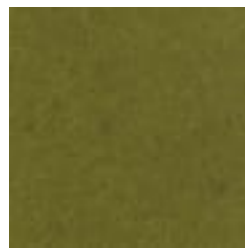
Meadow



Midnight



Ochre



Olive



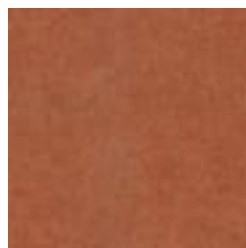
Parchment



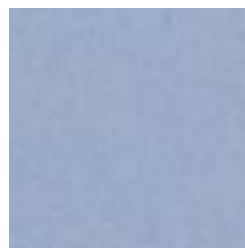
Pebble



Pewter



Saffron



Sky



Smoke

+1 855 922 7377

hello@zintraacoustic.com

zintraacoustic.com

4 of 7

zintra®

# BOX BAFFLES UNIFORMED HIGH

Acoustic Baffles



Slate



Storm



Sunshine



Tar



Twilight

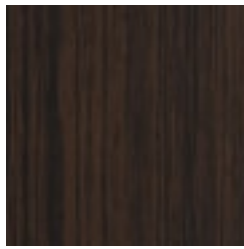
## Zintra Timber Print



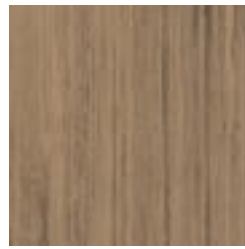
Eucalyptus



Ironbark

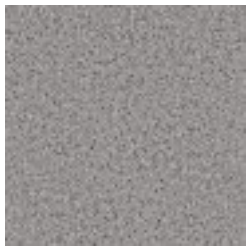


Merbau



Spotted Gum

## Zintra Premium Material



Terrazzo Light



Terrazzo Medium



Terrazzo Dark



Travertine Light



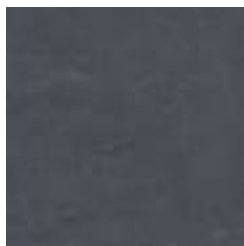
Travertine Medium



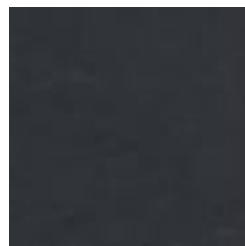
Travertine Dark



Shale Light



Shale Medium



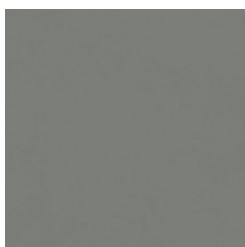
Shale Dark



Raku Bone



Raku Luster



Raku Jade



Concrete Cast



Concrete Polished



Concrete Dark Tint

+1 855 922 7377

hello@zintraacoustic.com

zintraacoustic.com

# BOX BAFFLES UNIFORMED HIGH

Acoustic Baffles



Terracotta Sun  
Bleached



Terracotta Mission



Terracotta Antique

## Zintra Premium Wood



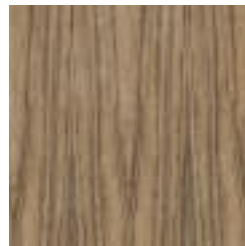
Knotty Pine



Maple



Poplar



Australian Walnut



Claro Walnut



Palm Wood



Rustic Walnut



Cherry



Euro Beech



Lacewood



Redwood

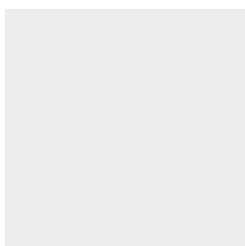


White Oak

## Powdercoat



Anodised Silver



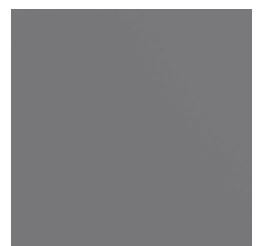
Bengal White



Denim



Fern



Gunmetal

+1 855 922 7377

hello@zintraacoustic.com

[zintraacoustic.com](http://zintraacoustic.com)

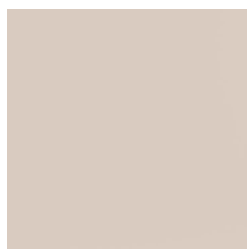
6 of 7

**zintra**<sup>®</sup>

# BOX BAFFLES UNIFORMED HIGH

Acoustic Baffles

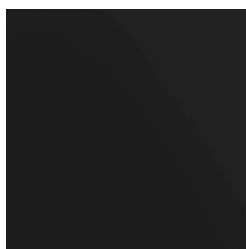
---



Light Grey



Marigold



Matte Black



Spice



Tango



Teal



Terracotta