

SHAPES TRIANGLE

Acoustic Ceiling Features



Brand: **Zintra**

Collections: **Shapes**

Applications: **Ceilings**

+1 855 922 7377

hello@zintraacoustic.com

zintraacoustic.com

1 of 7

zintra[®]

SHAPES TRIANGLE

Acoustic Ceiling Features



Shapes Square, Hexagon & Circle



Shapes Triangle Detail

SHAPES TRIANGLE

Acoustic Ceiling Features

Explore design possibilities with Zintra Shapes. Elevate your space with refined lines and structured triangular forms, seamlessly achieving optimal visual appeal while enhancing acoustic performance.

✓ Bleach Cleanable

✓ Acoustic

✓ Easy Install

✓ Easy Clean

Description

Zintra Shapes use geometric forms to complement the traditional angles of a room. Working well on their own or as a group, Shapes can be hung to draw attention to a specific space or spread out to draw the eye over the entire length of a room.

Triangle:

Harness the power of angles with this geometric marvel. Infuse any space with a contemporary edge, of modernity and dynamism.

Also available in 4 other great geometrical shapes and various sizes:

Circle:

Emphasize the beauty of curves. This timeless shape brings a sense of unity and harmony to your space. Whether used individually or in combination, creates a visually captivating and balanced ambiance that invites relaxation and creativity.

Hexagon:

Experience the allure of symmetry with this versatile and modern shape, designed to inspire a sense of balance and sophistication.

Square:

The symmetrical nature of this shape brings a sense of stability and balance to your space.

Rectangle:

The clean lines and defined form of this shape, provide a sleek and structured elegance.

Composition

Zintra Acoustic Panel - 100% Solution Dyed (Colour Through) Polyester

- 12mm (1/2") - Density 2.4 kg /m² 0.5 lb/ft²
- 24mm (1") - Density 3.6 kg /m² 0.75 lb/ft²

Sustainability

Zintra is made from 100% recyclable materials.

- 60% post-consumer recycled content from PET bottles.
- 35% pre-consumer recycled content from PET chips
- 5% polylactic acid (PLA)

SHAPES TRIANGLE

Acoustic Ceiling Features

Dimensions	<p>Triangle: Available in 2 sizes</p> <ul style="list-style-type: none">• Small: 522mm (20.5") h x 603mm (23.8") w• Large: 1213mm (47.8") h x 1400mm (55.1") w
Fire Rating	<p>ASTM-E84 – Class A classification AS ISO 9705 – 2003 – Group 1 classification EN-13501 – B-s2-d0 classification</p>
Supplied As	<p>Shape in selected design and colour.</p> <p>Cables to suit</p>
Assembly & Delivery	<ul style="list-style-type: none">• Shapes supplied flat pack.• Assembled shape is then suspended from the ceiling using hanging hardware supplied.• Recommended 2 People assembly <p>Go to the Technical Documents and download the Installation Guide for more details.</p>
Suggested Installation	<p>Go to Technical Documents and download the Installation Guide for more details.</p>
Care Instructions	<p>Vacuum to remove dust.</p> <p>Dab Zintra with a damp clean cloth and mild solution of liquid detergent and warm water. Repeat using only clean water, then pat dry with a lint free cloth.</p> <p>For difficult stains, use a solution of household bleach (10% bleach / 90% water). To remove the bleach, repeat using a clean, water dampened cloth, then pat dry.</p> <p>Always test in an inconspicuous area first and if you don't see the expected results, contact us.</p>
Warranty	<p>Visit FAQ for more details.</p>
Customisable	<p>The Zintra Acoustic Solutions range is customisable to your project. Please get in touch with your local contact for details.</p>

SHAPES TRIANGLE

Acoustic Ceiling Features

Additional Comments	NRC Rating
	1/2" (12mm) NRC Rating
	<ul style="list-style-type: none">• Directly Mounted: 0.45
	<ul style="list-style-type: none">• With 2" (50mm) Air Gap: 0.85
	<ul style="list-style-type: none">• With 6" (152mm) Air Gap: 0.90
	<ul style="list-style-type: none">• With 12" (305mm) Air Gap: 0.95
	1" (24mm) NRC Rating
	<ul style="list-style-type: none">• Directly Mounted: 0.75
	<ul style="list-style-type: none">• With 2" (50mm) Air Gap: 0.95
	<ul style="list-style-type: none">• With 6" (152mm) Air Gap: 0.95
	<ul style="list-style-type: none">• With 12" (305mm) Air Gap: 1.00

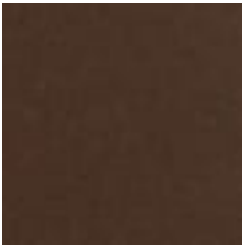
How to Specify	1. Select Design
	2. Select Size
	3. Select Zintra Colour

SHAPES TRIANGLE

Acoustic Ceiling Features

Color & Finish Options

Zintra 12mm Solid PET



Bark



Brick



Cadet



Chambray



Cobalt



Ecru



Elderberry



Fossil



Frost



Grass



Greige



Ivory



Linen



Malachite



Mandarin



Meadow



Midnight



Ochre



Olive



Parchment



Pebble



Pewter



Saffron



Sky



Smoke

SHAPES TRIANGLE

Acoustic Ceiling Features



Slate



Storm



Sunshine



Tar



Twilight

Zintra Timber Print



Eucalyptus



Ironbark



Merbau



Spotted Gum