

ORGANIC ETCH PANEL PLAID

Acoustic Panels



Brand: **Zintra**

Collection: **Organic Etch Panel**

+1 855 922 7377

hello@zintraacoustic.com

zintraacoustic.com

1 of 5

zintra[®]

ORGANIC ETCH PANEL PLAID

Acoustic Panels

Simple, tactile, and imperfectly perfect is how we describe our twelve Zintra Organic Etch designs. Introducing Plaid, a classic design that brings a timeless yet fresh aesthetic.

Description

Drawing inspiration from the craftsmanship of skilled artisans, Organic Etch effortlessly blends human creativity with the beauty of the natural world. Organic Etch panels not only enhance interior spaces with design and depth but also offer superior acoustics. Available in a diverse range of designs and choice of colours, each tells a story of simplicity, tactility, and imperfect perfection.

Plaid: Reimagine the iconic plaid design with horizontal and vertical lines crossing at right angles. This classic pattern brings a timeless yet fresh aesthetic to walls, adding depth and visual interest to any room.

Embrace imperfection and unlock the beauty of organic design. With a choice of 30 colours, lightweight and easy to cut Organic Etch is the perfect acoustic alternative to traditional commercial wallcoverings.

Available in 12 contemporary designs

Ceramic | Herringbone Stripe | Offset | Plaid | Rivers Horizontal | Rivers Vertical | Stacked | Stacked Etch | Stream Horizontal | Stream Vertical | Stripe | Twitch

Explore our twelve Organic Etch designs, each a contemporary interpretation. From the geometric design of Herringbone Stripe to the iconic box layout of Plaid, our panels bring texture and dimension to any space. Organic Etch Rivers captures the fluidity of nature with converging and diverging lines, while Organic Etch Stream evokes the tranquillity of flowing water. Partner patterns like Organic Etch Stacked and Stacked Plain to create coordinated designs, adding further depth to your environment

Dimensions

Available in 12mm (1/2") ONLY

Standard panel Size

1225mm (48") w x 2800mm (110") h x 12mm (1/2") d

Composition

Zintra Acoustic Panel - 100% Solution Dyed (Colour Through) Polyester

12mm (1/2") - Density 2.4 kg /m² 0.5 lb/ft²

Sustainability

Zintra is made from 100% recyclable materials.

- 60% post-consumer recycled content from PET bottles.
- 35% pre-consumer recycled content from PET chips
- 5% polylactic acid (PLA)

ORGANIC ETCH PANEL PLAID

Acoustic Panels

Fire Rating ASTM-E84 – Class A classification
AS ISO 9705 – 2003 – Group 1 classification
EN-13501 – B-s2-d0 classification

Warranty Visit FAQ for more details.

Assembly & Delivery Ships Flat Pack

Install using one of these four common techniques.

1. Direct to the substrate
2. Z-Clips
3. Stand Offs
4. Mechanical Fastener

Go to the Technical Documents and download the Installation Guide for more details.

Supplied As Flat Pack

Zintra Organic Etch panel.

Suggested Installation Go to Technical Documents and download the Installation Guide for more details.

How to Specify 1. Select Organic Etch Design

2. Select Zintra Colour

Care Instructions Vacuum to remove dust.

Dab Zintra with a damp clean cloth and mild solution of liquid detergent and warm water. Repeat using only clean water, then pat dry with a lint free cloth.

For difficult stains, use a solution of household bleach (10% bleach / 90% water). To remove the bleach, repeat using a clean, water dampened cloth, then pat dry.

Always test in an inconspicuous area first and if you don't see the expected results, contact us.

Additional Comments NRC 0.45 -0.75

ORGANIC ETCH PANEL PLAID

Acoustic Panels

Color & Finish Options

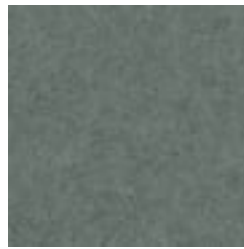
Zintra 12mm Solid PET



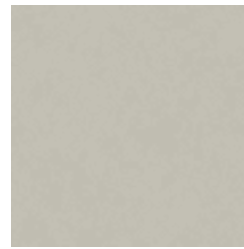
Bark



Brick



Cadet



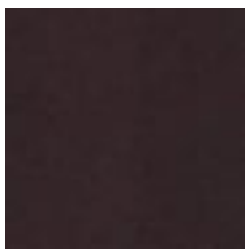
Chambray



Cobalt



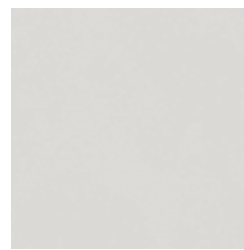
Ecu



Elderberry



Fossil



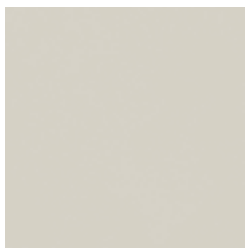
Frost



Grass



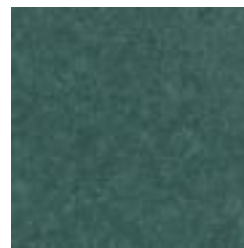
Greige



Ivory



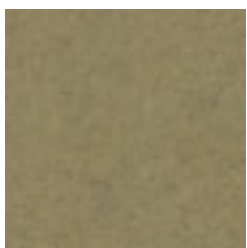
Linen



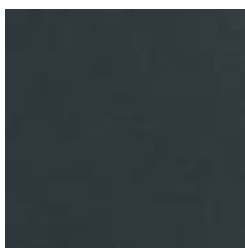
Malachite



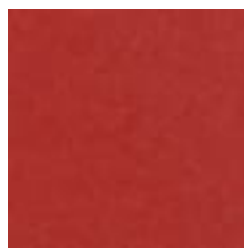
Mandarin



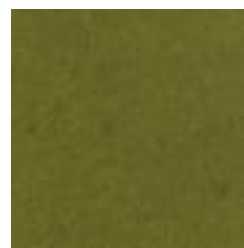
Meadow



Midnight



Ochre



Olive



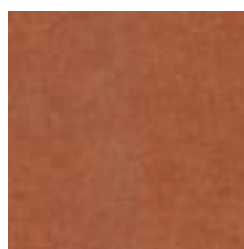
Parchment



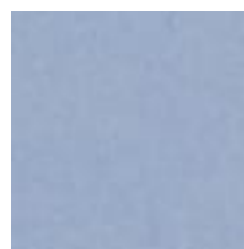
Pebble



Pewter



Saffron



Sky



Smoke

+1 855 922 7377

hello@zintraacoustic.com

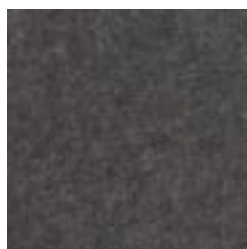
zintraacoustic.com

4 of 5

zintra®

ORGANIC ETCH PANEL PLAID

Acoustic Panels



Slate



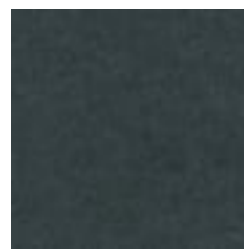
Storm



Sunshine



Tar



Twilight