

# EMBOSS PANEL JUNGLE

Acoustic Panels



Brand: **Zintra**

Collection: **Emboss Panel**

+1 855 922 7377

hello@zintraacoustic.com

[zintraacoustic.com](http://zintraacoustic.com)

1 of 7

**zintra**<sup>®</sup>

# EMBOSS PANEL JUNGLE

Acoustic Panels

---



Emboss Panel Jungle  
Detail Ivory



Emboss Panel Jungle  
Detail

# EMBOSS PANEL JUNGLE

Acoustic Panels

Introducing a touch of opulence to acoustic solutions, elevating spaces with both sound absorption and tactile sophistication with Zintra Emboss Panel Jungle

✓ Acoustic

✓ Bleach Cleanable

✓ Easy Clean

✓ Easy Install

## Description

Zintra Emboss Panels brings a touch of luxury to acoustic solutions, combining timeless craftsmanship with advanced technology. These tactile three-dimensional panels create an immersive experience that transforms the ambiance of any space. The warm heather of Zintra softens the environment, ensuring that even the most austere spaces feel inviting.

Designed for seamless installation, Zintra Emboss Panels can be installed both vertically or horizontally, offering versatile design possibilities. They provide more than just noise absorption—they tell a story with every surface. Their intricate patterns and dynamic visual effects shift with perspective, adding depth and warmth to any room, making conversations flow effortlessly without echoes or disturbances.

**Jungle**, inspired by the untamed beauty of tropical jungles, Jungle brings the vibrancy and life of the rainforest to your space. The pattern showcases an array of lush leaves, creating a captivating and immersive experience.

Zintra Emboss panels offer a visual symphony that sparks imagination, adding a dash of enchantment to any environment.

Please note, Zintra Emboss is suitable for single-sided applications only.

### Available in 18 great designs.

Ascend | Celium | Constellation | Corduroy | Corduroy Fine | Cumulus | Damask | Jungle | Linked | Molecular | Rivulet | Sandglass | Scallop | Stitched | Tapestry | Tidal | Tufted | Woven

In hospitality, commercial, and care environments, Zintra Emboss Panels don't just absorb sound – they elevate spaces with their luxurious textures and calming designs, creating atmospheres that are as visually captivating as they are acoustically sound.

Please note: Zintra Emboss is suitable for single-sided applications only.

### Don't just design spaces. Craft experiences.

## Dimensions

Available in 12mm (1/2")  
2743mm (108") x 1118mm (44")

"Emboss Panel patterns will align with a commercial tolerance of +/- 1mm. Panel thickness may vary by 15%. Pack as required to align face."

# EMBOSS PANEL JUNGLE

Acoustic Panels

---

**Composition** Zintra Acoustic Panel - 100% Solution Dyed (Colour Through) Polyester  
12mm (1/2") - Density 2.4 kg /m<sup>2</sup> 0.5 lb/ft<sup>2</sup>

---

**Sustainability** Zintra is made from 100% recyclable materials.

- 60% post-consumer recycled content from PET bottles.
- 35% pre-consumer recycled content from PET chips
- 5% polylactic acid (PLA)

---

**Fire Rating** ASTM-E84 – Class A classification  
AS ISO 9705 – 2003 – Group 1 classification  
EN-13501 – B-s2-d0 classification

---

**Warranty** Visit FAQ for more details.

---

**Assembly & Delivery** Ships Flat Pack

Go to the Technical Documents and download the Installation Guide for more details.

---

**Supplied As** 1 x Emboss Panel in selected pattern

---

**Suggested Installation** Go to Technical Documents and download the Installation Guide for more details.

---

**Fabrication Techniques** Utility knife and CNC with oscillating knife.

---

**How to Specify**

1. Select Emboss design
2. Select Zintra Colour

---

# EMBOSS PANEL JUNGLE

Acoustic Panels

---

## Care Instructions

Vacuum to remove dust.

Dab Zintra with a damp clean cloth and mild solution of liquid detergent and warm water. Repeat using only clean water, then pat dry with a lint free cloth.

For difficult stains, use a solution of household bleach (10% bleach / 90% water). To remove the bleach, repeat using a clean, water dampened cloth, then pat dry.

Always test in an inconspicuous area first and if you don't see the expected results, contact us.

---

## Additional Comments

NRC 0.35

---

# EMBOSS PANEL JUNGLE

Acoustic Panels

## Color & Finish Options

Zintra 12mm Solid PET



Bark



Brick



Cadet



Chambray



Cobalt



Ecu



Elderberry



Fossil



Frost



Grass



Greige



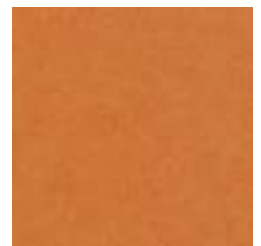
Ivory



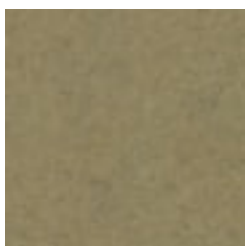
Linen



Malachite



Mandarin



Meadow



Midnight



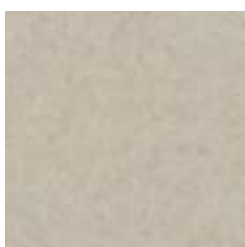
Ochre



Olive



Parchment



Pebble



Pewter



Saffron



Sky



Smoke

+1 855 922 7377

hello@zintraacoustic.com

zintraacoustic.com

6 of 7

zintra®

# EMBOSS PANEL JUNGLE

Acoustic Panels

---



Slate



Storm



Sunshine



Tar



Twilight

## Zintra Timber Print



Eucalyptus



Ironbark



Merbau



Spotted Gum