

CONNECT CUBIX

Acoustic Baffles



Brand: **Zintra**

Collection: **Connect Baffles**

+1 855 922 7377

hello@zintraacoustic.com

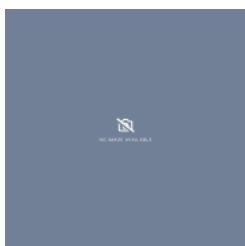
zintraacoustic.com

1 of 7

zintra[®]

CONNECT CUBIX

Acoustic Baffles



EMPTY VARIANT



Connect Baffle Cubix
Detail

CONNECT CUBIX

Acoustic Baffles

Add sculptural on-trend geo-accents to your ceiling space with Connect Cubix Baffles. Designed for full ceiling coverage.

✓ **Acoustic**

✓ **Bleach Cleanable**

✓ **Easy Clean**

✓ **Easy Install**

Description

Add sculptural on-trend geo-accents to your ceiling space with Connect Baffles. An innovative solution to large areas requiring improved acoustics, Connect Baffle options are designed with full ceiling coverage in mind and will create a ceiling space with architectural shape, form and definitive character. **Connect Cubix** features a grid of interconnected squares, creating a visually dynamic and orderly design. This pattern brings a sense of structure and balance to interior spaces.

Connect Baffles are also available in 4 other great designs:

Cirrus is characterized by a linear, interconnected design, arranged in a flowing, cohesive formation. This pattern adds a sense of movement and unity to interior spaces.

Hive showcases a network of interconnected hexagons, offering a visually striking and cohesive design. This pattern introduces a sense of symmetry and harmony to interior spaces.

Prismatic features a collection of interconnected triangles, presenting a visually captivating and harmonious design. This pattern introduces a sense of structure and balance to interior spaces.

Rise showcases a combination of interconnected geometric shapes, including small rectangles and larger, randomized forms. This captivating design adds visual interest and complexity to interior spaces.

Dimensions

Cubix

- 18 cubes / set, 1.8m² (18.9 SF)
- 930mm (36.6") w x 1889mm (74.4") d x 120mm (4.7") h

Composition

Zintra Acoustic Panel - 100% Solution Dyed (Colour Through) Polyester

12mm (1/2") -Density 2.4 kg /m² 0.5 lb/ft²

Sustainability

Zintra is made from 100% recyclable materials.

- 60% post-consumer recycled content from PET bottles.
- 35% pre-consumer recycled content from PET chips
- 5% polylactic acid (PLA)

CONNECT CUBIX

Acoustic Baffles

Fire Rating ASTM-E84 – Class A classification
AS ISO 9705 – 2003 – Group 1 classification
EN-13501 – B-s2-d0 classification

Warranty Visit FAQ for more details.

Assembly & Delivery **Connect Baffles are supplied flat pack.**

Assembled your Connect Baffle then suspended from the ceiling using hanging hardware supplied.

Recommended 2 People assembly

Go to the Technical Documents and download the Installation Guide for more details.

Supplied As Connect Cubix

- 18 Connect Connectors
- 1 x each Hanger Bolt, Adjustable Fastener, Cable with swage end and barrel.

Suggested Installation Go to Technical Documents and download the Installation Guide for more details.

Fabrication Techniques Stanley knife and straight edge

How to Specify 1. Select Design

 2. **Select** Size

 3. Select Zintra Colour

Care Instructions Vacuum to remove dust.

Dab Zintra with a damp clean cloth and mild solution of liquid detergent and warm water. Repeat using only clean water, then pat dry with a lint free cloth.

For difficult stains, use a solution of household bleach (10% bleach / 90% water). To remove the bleach, repeat using a clean, water dampened cloth, then pat dry.

Always test in an inconspicuous area first and if you don't see the expected results, contact us.

CONNECT CUBIX

Acoustic Baffles

Customisable

The Zintra Acoustic Solutions range is customisable to your project. Please get in touch with your local contact for details.

Additional Comments

NRC Rating

- Without Air Gap: Up to 0.90
 - With 24" (610mm) Air Gap: Up to 0.95
-

CONNECT CUBIX

Acoustic Baffles

Color & Finish Options

Zintra 12mm Solid PET



Bark



Brick



Cadet



Chambray



Cobalt



Ecu



Elderberry



Fossil



Frost



Grass



Greige



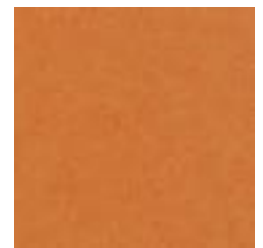
Ivory



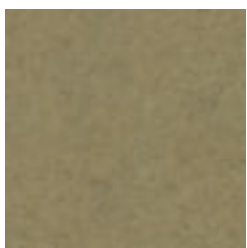
Linen



Malachite



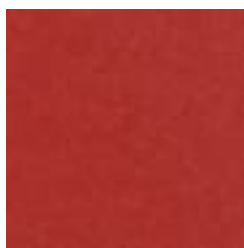
Mandarin



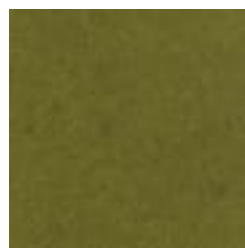
Meadow



Midnight



Ochre



Olive



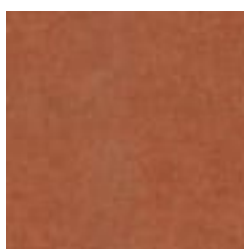
Parchment



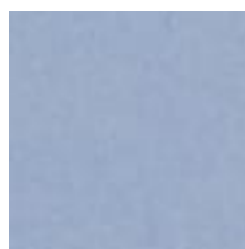
Pebble



Pewter



Saffron



Sky



Smoke

+1 855 922 7377

hello@zintraacoustic.com

zintraacoustic.com

6 of 7

zintra[®]

CONNECT CUBIX

Acoustic Baffles



Slate



Storm



Sunshine



Tar



Twilight

Zintra Timber Print



Eucalyptus



Ironbark



Merbau



Spotted Gum